

Monterey Park

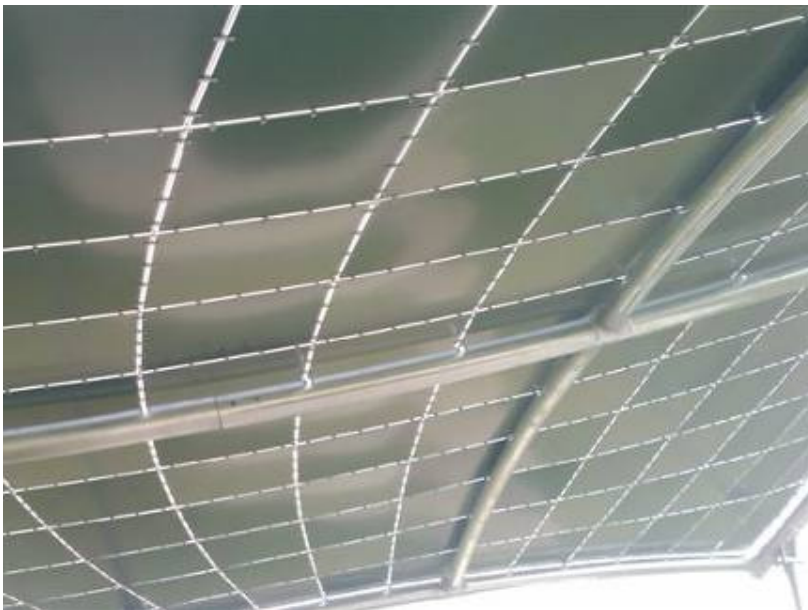
Cable Supported Structure



Frankston City Council created an outdoor stage area as part of landscape works at this regional park. In order to maximize the areas usage it was proposed to install a shade structure to protect the performers and create a focal point for the stage.

Due to the location, the project required a robust structure that minimized the potential for vandalism and it was deemed that a fabric structure would not be appropriate for the location, however, Council were seeking the organic sound shell type form that a fabric structure could offer.

In order to achieve this, a number of individual custom shaped aluminium mesh panels were supported via a cable grid system that spanned between the perimeter arch beams. The 156 mesh panels were powdercoated in 3 different colours to enhance the overall aesthetics of the structure. The end result was an extremely innovative, striking and durable structure.



Client:

Frankston City Council

Location:

Monterey Park, Frankston

Date of Completion:

August, 2010

Product Type:

Cable Supported Structure

Fabric Type:

Perforated aluminium mesh

Steel Finish:

Powder coated

Scope of Works:

Design
Engineering
Manufacture
Project Management
Install

Area of Coverage:

180 m²

Function:

Shade structure to cover an outdoor stage area.